

FINISH SCHEDULE

ROOM NO.	ROOM DESCRIPTION	FLOOR		BASE TRIM		WALL		CEILING		CEILING HEIGHT	FINISH SCHEDULE REMARKS
		MATERIAL	FINISH	MATERIAL	FINISH	MATERIAL	FINISH	MATERIAL	FINISH		
100	VESTIBULE	POLISHED CONCRETE	CONCRETE SEALER	ALUM. STOREFRONT	KYNAR	ALUM. & GLASS	KYNAR FINISHED ALUMINUM & GLASS	2' X 2' SUSPENDED ACOUSTICAL PANELS, TYPE 1.	--	9'-8"	-
101	DAYROOM / TRAINING	POLISHED CONCRETE	CONCRETE SEALER	4" RUBBER	--	CMU	CMU SEALER & LATEX ACRYLIC PAINT	2' X 2' SUSPENDED ACOUSTICAL PANELS, TYPE 1.	--	9'-8"	1
101A	CORRIDOR	POLISHED CONCRETE	CONCRETE SEALER	4" RUBBER	--	CMU	CMU SEALER & LATEX ACRYLIC PAINT	2' X 2' SUSPENDED ACOUSTICAL PANELS, TYPE 1.	--	9'-8"	-
102	VESTIBULE	POLISHED CONCRETE	CONCRETE SEALER	4" RUBBER	--	GWB	PVA PRIMER & LATEX ACRYLIC PAINT	5/8" GYSPUM WALLBOARD.	LEVEL 4 / PAINTED	9'-0"	-
103	MEN'S BUNKROOM	POLISHED CONCRETE	CONCRETE SEALER	4" RUBBER	--	CMU	CMU SEALER & LATEX ACRYLIC PAINT	2' X 2' SUSPENDED ACOUSTICAL PANELS, TYPE 2.	--	9'-8"	-
103A	MEN'S BUNKROOM BATH	PORCELAIN TILE	---	3" PORCELAIN	---	CMU	CMU SEALER & LATEX ACRYLIC PAINT	5/8" GYSPUM WALLBOARD.	LEVEL 4 / PAINTED	9'-0"	2, 3, 6
103B	CLOSET	POLISHED CONCRETE	CONCRETE SEALER	4" RUBBER	--	CMU	CMU SEALER & LATEX ACRYLIC PAINT	5/8" GYSPUM WALLBOARD.	LEVEL 4 / PAINTED	9'-0"	-
103C	CLOSET	POLISHED CONCRETE	CONCRETE SEALER	4" RUBBER	--	CMU	CMU SEALER & LATEX ACRYLIC PAINT	5/8" GYSPUM WALLBOARD.	LEVEL 4 / PAINTED	9'-0"	-
104	WOMEN'S BUNKROOM	POLISHED CONCRETE	CONCRETE SEALER	4" RUBBER	--	CMU	CMU SEALER & LATEX ACRYLIC PAINT	2' X 2' SUSPENDED ACOUSTICAL PANELS, TYPE 2.	--	9'-8"	-
104A	WOMEN'S BUNKROOM BATH	PORCELAIN TILE	---	3" PORCELAIN	---	CMU	CMU SEALER & LATEX ACRYLIC PAINT	5/8" GYSPUM WALLBOARD.	LEVEL 4 / PAINTED	9'-0"	2, 3, 6
104B	CLOSET	POLISHED CONCRETE	CONCRETE SEALER	4" RUBBER	--	CMU	CMU SEALER & LATEX ACRYLIC PAINT	5/8" GYSPUM WALLBOARD.	LEVEL 4 / PAINTED	9'-0"	-
104C	CLOSET	POLISHED CONCRETE	CONCRETE SEALER	4" RUBBER	--	CMU	CMU SEALER & LATEX ACRYLIC PAINT	5/8" GYSPUM WALLBOARD.	LEVEL 4 / PAINTED	9'-0"	-
105	STORAGE	POLISHED CONCRETE	CONCRETE SEALER	4" RUBBER	--	CMU	CMU SEALER & LATEX ACRYLIC PAINT	5/8" GYSPUM WALLBOARD.	LEVEL 4 / PAINTED	9'-0"	-
106	WOMEN'S TOILET	POLISHED CONCRETE	CONCRETE SEALER	3" PORCELAIN	--	CMU	CMU SEALER & LATEX ACRYLIC PAINT	5/8" GYSPUM WALLBOARD.	LEVEL 4 / PAINTED	9'-0"	2
107	MEN'S TOILET	POLISHED CONCRETE	CONCRETE SEALER	3" PORCELAIN	--	CMU	CMU SEALER & LATEX ACRYLIC PAINT	5/8" GYSPUM WALLBOARD.	LEVEL 4 / PAINTED	9'-0"	2
108	OFFICE	POLISHED CONCRETE	CONCRETE SEALER	4" RUBBER	--	CMU	CMU SEALER & LATEX ACRYLIC PAINT	5/8" GYSPUM WALLBOARD.	LEVEL 4 / PAINTED	9'-0"	-
109	APPARATUS ROOM	POLISHED CONCRETE	CONCRETE SEALER	4" RUBBER	--	CMU / PEMB	CMU SEALER & LATEX ACRYLIC PAINT	PEMB EXPOSED STRUCTURE.	PAINTED	VARIES	-
109A	WET AREA	POLISHED CONCRETE	CONCRETE SEALER	4" RUBBER	--	CMU	CMU SEALER & LATEX ACRYLIC PAINT	5/8" GYSPUM WALLBOARD.	LEVEL 4 / PAINTED	9'-0"	-
109B	TURNOUT GEAR	POLISHED CONCRETE	CONCRETE SEALER	4" RUBBER	--	CMU	CMU SEALER & LATEX ACRYLIC PAINT	5/8" GYSPUM WALLBOARD.	LEVEL 4 / PAINTED	9'-0"	-
110	ELECTRICAL / I.T. ROOM	POLISHED CONCRETE	CONCRETE SEALER	4" RUBBER	--	CMU	CMU SEALER & LATEX ACRYLIC PAINT	5/8" GYSPUM WALLBOARD.	LEVEL 4 / PAINTED	9'-0"	-
111	LAUNDRY	POLISHED CONCRETE	CONCRETE SEALER	4" RUBBER	--	CMU	CMU SEALER & LATEX ACRYLIC PAINT	5/8" GYSPUM WALLBOARD.	LEVEL 4 / PAINTED	9'-0"	-
112	CORRIDOR	POLISHED CONCRETE	CONCRETE SEALER	4" RUBBER	--	CMU	CMU SEALER & LATEX ACRYLIC PAINT	2' X 2' SUSPENDED ACOUSTICAL PANELS, TYPE 1	--	9'-0"	-
113	MEDICAL SUPPLY	POLISHED CONCRETE	CONCRETE SEALER	4" RUBBER	--	CMU	CMU SEALER & LATEX ACRYLIC PAINT	5/8" GYSPUM WALLBOARD.	LEVEL 4 / PAINTED	9'-0"	-
114	TOILET	POLISHED CONCRETE	CONCRETE SEALER	3" PORCELAIN	--	CMU	CMU SEALER & LATEX ACRYLIC PAINT	5/8" GYSPUM WALLBOARD.	LEVEL 4 / PAINTED	9'-0"	2
115	DECONTAMINATION ROOM	POLISHED CONCRETE / CERAMIC MOSIAC	CONCRETE SEALER	3" PORCELAIN	---	CMU	CMU SEALER & LATEX ACRYLIC PAINT	5/8" GYSPUM WALLBOARD.	LEVEL 4 / PAINTED	9'-0"	7
116	STORAGE	POLISHED CONCRETE	CONCRETE SEALER	4" RUBBER	--	CMU	CMU SEALER & LATEX ACRYLIC PAINT	5/8" GYSPUM WALLBOARD.	LEVEL 4 / PAINTED	9'-0"	-
117	OXYGEN TANK ROOM	POLISHED CONCRETE	CONCRETE SEALER	4" RUBBER	--	CMU	CMU SEALER & LATEX ACRYLIC PAINT	5/8" GYSPUM WALLBOARD.	LEVEL 4 / PAINTED	9'-0"	-
118	STORAGE	POLISHED CONCRETE	CONCRETE SEALER	4" RUBBER	--	CMU	CMU SEALER & LATEX ACRYLIC PAINT	5/8" GYSPUM WALLBOARD.	LEVEL 4 / PAINTED	9'-0"	-
119	SPRINKLER RISER ROOM	POLISHED CONCRETE	CONCRETE SEALER	4" RUBBER	--	CMU	CMU SEALER & LATEX ACRYLIC PAINT	5/8" GYSPUM WALLBOARD.	LEVEL 4 / PAINTED	9'-0"	-

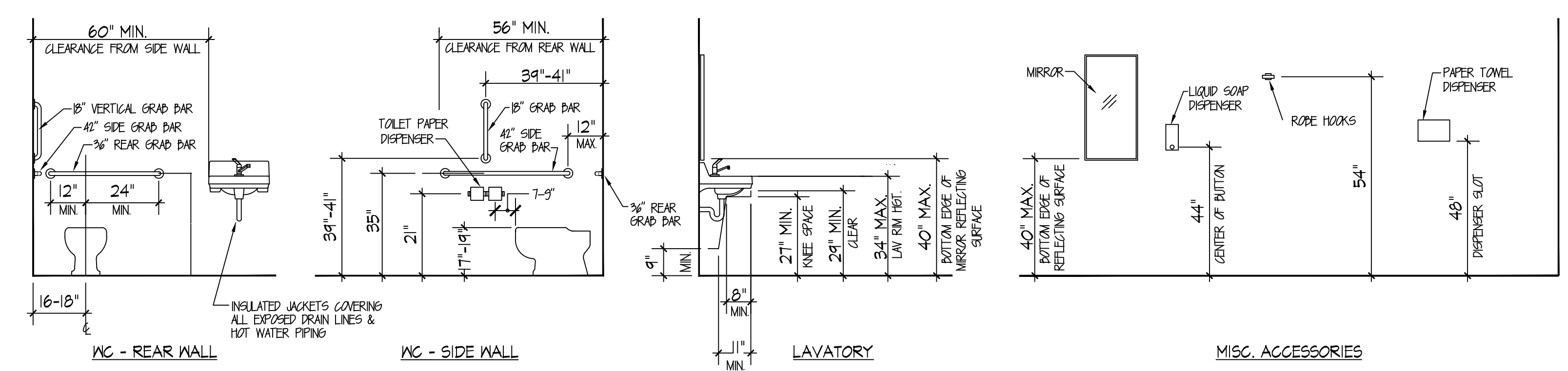
FINISH SCHEDULE REMARKS:

- PROVIDE 3" X 12" THINSET PORCELAIN SUBWAY TILES AS A BACKSPLASH ABOVE COUNTERTOPS. SET TILES HORIZONTALLY IN A RUNNING BOND PATTERN. COLOR OF TILE AND GROUT SELECTED BY THE ARCHITECT. SEE INTERIOR ELEVATION 2/A302.
- PROVIDE 3" X 12" THINSET PORCELAIN SUBWAY TILE FLOOR TO CEILING ON METWALL AND IN THE SHOWER. SET TILES HORIZONTALLY IN A RUNNING BOND PATTERN. COLOR OF TILE AND GROUT SELECTED BY THE ARCHITECT.
- IN BUNKROOM TOILETS 103A AND 104A, PROVIDE SUBWAY TILE ON EACH SIDE AND ON THE EXPOSED END OF THE 12" WIDE PARTITION THAT SEPARATES THE SHOWER FROM THE TOILET AREA.
- PORCELAIN SUBWAY TILE BASE, IN ROOMS INDICATED, SHALL BE 3" X 12" WITH A BULLNOSE TOP WHERE IT IS A WALL BASE ONLY AT THE ROOM PERIMETER. BOTTOM OF TILE SHALL BE STRAIGHT (NOT COVERED).
- 4" RUBBER BASE, WHERE INDICATED, SHALL BE COVERED TYPE.
- IN BUNKROOM TOILETS 103A AND 104A, PROVIDE 2" X 2" CERAMIC MOSAIC TILE IN THE SHOWER AND 12" X 24" PORCELAIN TILE ON THE BATHROOM FLOOR. SEE DRAWING A702 FOR LAYOUT.
- IN DECONTAMINATION ROOM 115, PROVIDE 2" X 2" CERAMIC MOSAIC TILE IN THE SHOWER AND IN THE DRYING AREA. SEE DRAWING A702 FOR LAYOUT.

TOILET ACCESSORY SCHEDULE

MARK	ITEM	MOUNTING LOCATION
TA-1	PAPER TOWEL DISPENSER	48" AFF TO DISPENSER SLOT
TA-2	LIQUID SOAP DISPENSER	44" AFF TO DISPENSER OPERATOR
TA-3	TOILET TISSUE DISPENSER	20" TO 28" TO CENTERLINE OF ROLL.
TA-4	24"x36" SURFACE MOUNTED MIRROR	40" AFF TO BOTTOM OF REFLECTING SURFACE
TA-5	42" HORIZONTAL GRAB BAR	35" AFF TO CENTERLINE OF BAR
TA-6	36" HORIZONTAL GRAB BAR	35" AFF TO CENTERLINE OF BAR
TA-7	24" HORIZONTAL GRAB BAR	35" AFF TO CENTERLINE OF BAR
TA-8	18" VERTICAL GRAB BAR	40" AFF TO BOTTOM OF BAR
TA-9	SHOWER SEAT	17" TO 19" FROM FLOOR TO TOP OF SEAT
TA-10	CURTAIN ROD WITH CURTAIN & HOOKS	75" AFF TO CENTERLINE OF BAR
TA-11	INSULATED PIPE WRAP	LAVATORY P-TRAP
TA-12	ROBE HOOK	56" AFF TO CENTERLINE OF HOOK
TA-13	MOP RACK	MOUNT AT HEIGHT FIELD DIRECTED.
TA-14	VINYL COATED WIRE SHELF	5'-0" (+/-) TO TOP OF SHELF.

PROVIDE SOLID WOOD BLOCKING IN METAL STUD FRAMED PARTITIONS TO SUPPORT WALL-MOUNTED ACCESSORIES.



TYPICAL ACCESSIBLE MOUNTING HEIGHTS
SCALE: 3/8" = 1'-0"



DATE:	01-30-2026
NO.	REVISION DATE
1	06-12-2026
2	
3	
SHEET:	A604
DRAWN BY:	DMW
CHECKED BY:	MRL
PROJECT NO.:	TLG-2515
THE LANE GROUP INC.	