

ADDENDUM NUMBER 2

Project: C. Wayne Stevens, Jr. Public Safety Facility
Highlands Business Park – Owens Drive
Glade Spring, VA 24340

Date: June 5, 2026

The following revisions, deletions, additions, amendments, modifications, and clarifications are hereby made part of the Construction Documents for the Project referenced above and shall supersede or otherwise modify the original documents dated January 30, 2026, in the manner and to the extent stated below. **Receipt of this Addendum shall be acknowledged in the space provided on the Bid Form.**

SPECIFICATIONS

1. **Refer to Terms and Conditions of Bid:** At paragraph C, “Form of Bid” and paragraph D, “Bid Bond or Guarantee”, please make note of all items that must be submitted with Bid. These items include:
 - a. Completed Bid Form using form provided in the Project Manual, signed in ink,
 - b. References using the form provided in the Project Manual,
 - c. Lobbying certification using form provided in the Project Manual,
 - d. Certification regarding debarment and suspension using the form provided in the Project Manual,
 - e. A Bid Bond or Guarantee.
 - f. All submitted within an outer envelope bearing name of Project, Bidder’s name, and address. Note also that Bidder is a licensed Class A Virginia Contractor by providing the license number on the outside envelope.

Failure to include all items may result in rejection of Bid.

2. **Refer to Section 033000, “Cast-in-Place Concrete”:** Under paragraph 3.8, “Finishing Floors and Slabs”, add paragraph E, “Polished Floor Surfaces.” This paragraph shall read the same as the “Floor Finish Notes” on Drawing A701. The intent is that, in lieu of applied floor finishes, all interior concrete floors, (except as shown on Drawing A702), shall receive a Level 4 High Gloss (800-grit) finish. Floors shall have a “Distinctness of Image (DOI) of 70 to 100 and a haze reading less than 10.
3. **Refer to Section 064116, “Plastic-Laminate-Faced Architectural Cabinets”:** Specification is for an American-style cabinet with face frame. Euro-style cabinets (frameless) are permitted providing they meet AWI Custom Grade fabrication, material, and aesthetic conditions. Maximum gap between doors shall be 1/8-inch. Maximum reveal between the countertop’s bottom edge and overlay doors / drawers shall not exceed 3/8-inch. **PVC/ABS edgebanding is NOT permitted.** All exposed surfaces shall be plastic-laminate finished.



4. **Refer to Section 074213, "Insulated Metal Wall Panels":** Per paragraph 2.1, the core insulation shall be foamed insulation. A Basis of Design product is listed. This product has an R-Value of 17.5. The minimum wall panel R-Value for this project, according to the Virginia Energy Conservation Code, is R-13. Other wall panel manufacturers who regularly engage in the manufacturing of insulated metal wall panels will be given consideration, provided an R-13 or greater value is achieved by the foamed insulation core. Architectural drawings are based on a 2-inch-thick wall panel.
5. **Refer to Section 093000, "Ceramic Tile":** Bidder has requested to bid 4" x 12" subway tile, supposedly because one of the manufacturers listed does not make a 3" x 12" product that also comes with a 3" x 12" bullnosed trim piece for use as a wall base. The specifications list five (5) acceptable manufacturers with a note that the bid is not limited to these five. Further, the manufacturer in question does, indeed, manufacture a 3" x 12" subway tile and a bullnosed 3" x 12" trim piece for use as a wall base. Therefore, the bid should be for the preferred 3" x 12" size and not the requested 4" x 12" tile.
6. **Refer to Section 093000, "Ceramic Tile":** Per paragraph 2.4.C, grout shall be polymer-modified tile grout meeting the requirements of ANSI A188.7, color as selected from manufacturer's standards. Contractor may opt to use epoxy grout on the three (3) shower floors, but it is not necessary on tile walls.
7. **Refer to Section 093000, "Ceramic Tile":** Delete paragraph 2.5C, "Metal Edge Strips": Metal edge trim is not acceptable.

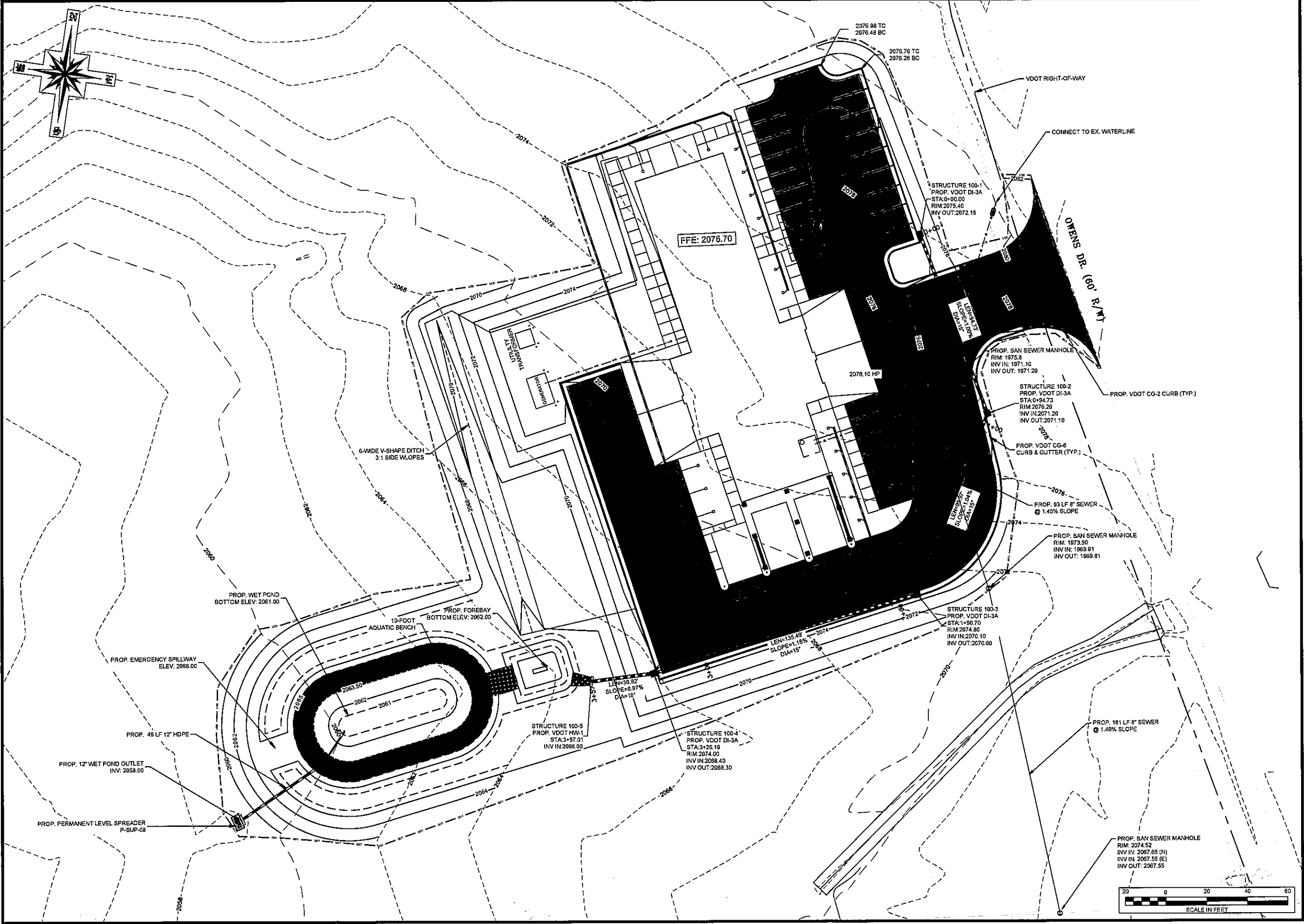
DRAWINGS

1. **Refer to Drawing T100, "Title Sheet / Drawing Index / Location Information":** Add Drawing A702, "Finishes at Ceramic Tile Locations" to the Drawing Index.
2. **Refer to Drawing C101, "Site / Grading Plan":** Drawing C101 issued previously has been replaced with this version, dated 06-05-2026. The stormwater structure previously located near the Generator has been deleted. Additional spot elevations and flow arrows have been added for clarification. Pond grading has been updated. Level spreader, P-SUP-08, has been added.
3. **Refer to Drawing C203, "Wet Pond Details":** This Drawing is added by this Bid Addendum. It is, however, mislabeled as "Site/Grading Plan." This pond detail sheet provides additional information about pond grading and the outlet structure.
4. **Refer to Drawing S101, "Foundation Plan":** At the three shower locations, (Rooms 103A, 104A, and 115), recess the floor slab to accommodate a tile mud bed. See new Drawing A702 for recessed slab dimensions.
5. **Refer to Drawing A101, "Floor Plan / Partition Types & Notations":** Partition Key Note #1, indicates that interior liner panels will be required on interior face to a height of 8'-0". These interior liner panels will NOT be required, given that the exterior wall panels are scheduled to be insulated metal panels and will have a metal panel on the inside face.
6. **Refer to Drawing A101, "Floor Plan / Partition Types & Notations":** At Partition Key Note #1, the core insulation in the insulated metal wall panels shall be foamed type.
7. **Refer to Drawing A303, Building Section – North":** Drawing indicates a 4-inch-high curb at the two shower locations. Delete the curb. See new Drawing A702 for shower details.
8. **Refer to Drawing A306, "Building Section – Apparatus Bay":** See Drawing line item #1, above. Interior metal liner panels will NOT be required.



9. **Refer to Drawing A702, "Finishes at Ceramic Tile Locations":** Drawing A702 is added by this Bid Addendum.
10. **Refer to Drawing A702, "Finishes at Ceramic Tile Locations":** Bidder noted that polished concrete floors are not practical at shower and potentially wet floor locations. Drawing A702 is added to indicate where ceramic mosaic tile and porcelain floor tile should be added to the Scope of Work. Drawing A702 also indicates typical shower section.
11. **Refer to Drawing MPE101, "Mechanical, Plumbing, and Electrical Specifications":** Bidder noted that specs list heat pumps for the roof tops, not gas packs, but says they need gas reheat. This is not a correct reading of the specification. The units are electric heat pumps that require hot gas reheat as a dehumidification feature. Hot gas reheat captures waste heat from the compressor's hot refrigerant gas to warm cold, dehumidified air before the air enters the facility.
12. **Refer to Drawing MPE101, "Mechanical, Plumbing, and Electrical Specifications":** Bidder notes there is no "BacNet" capability on the equipment specs and is guessing the facility is not a remote monitored EMS system. This is a correct assumption. There is no Energy Monitoring System (EMS) that tracks temperature, humidity, power usage, etc. On-site staff will be responsible for monitoring and managing these facility conditions.
13. **Refer to Drawing FP101, "Fire Protection Design Intent":** This Drawing indicates a PIV after the tap and deletion of the wall PIV previously indicated. The backflow for the fire service line was already included, as shown on the riser diagram.
14. **Refer to Drawing FP102, "Fire Protection Design Intent":** The Fire Protection Site Plan has been modified to show the Post Indicator Valve location near the tap.

END OF ADDENDUM NO. 2 (8 pages, including attachments)



PLAN: NEW WASHINGTON COUNTY, VIRGINIA EMS FACILITY GLADE SPRING, VIRGINIA SITE DESIGNATIONS



Rinker Design Associates, LLC
 319 Valley Street, NW, Abingdon, Virginia 24210
 Telephone: 276.266.6571 | www.rdaenv.com

NEW EMS FACILITY FOR
 WASHINGTON COUNTY, VIRGINIA
 HIGHLANDS BUSINESS PARK
 OWENS DRIVE
 GLANDE SPRING, VA 24340

SITE/GRADING PLAN

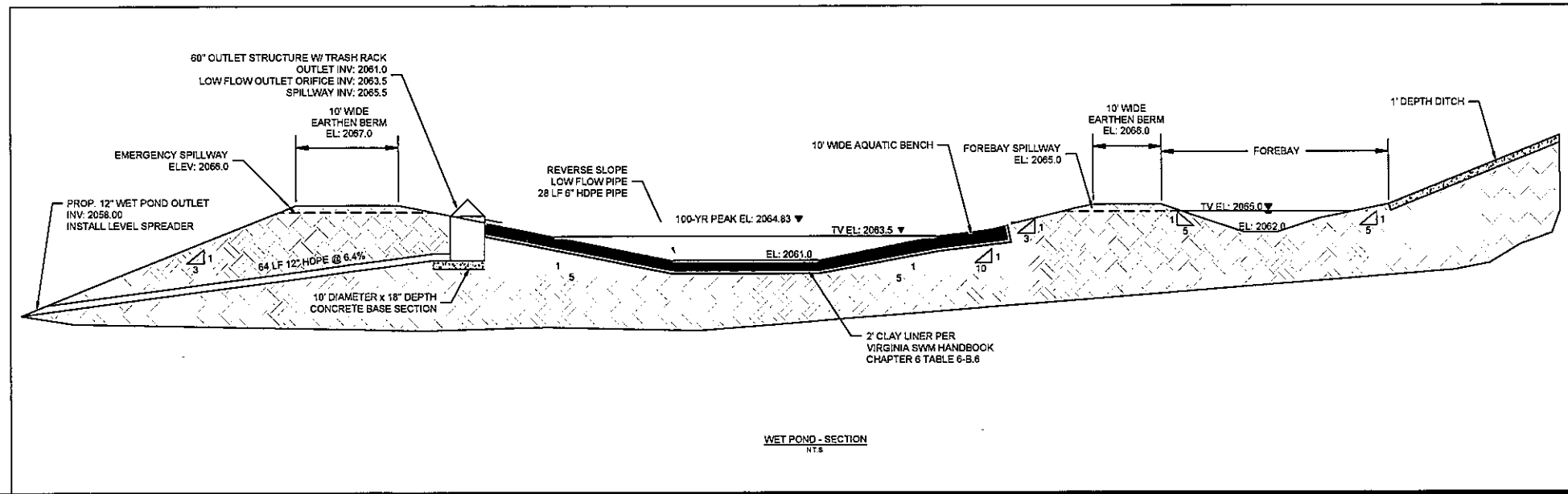
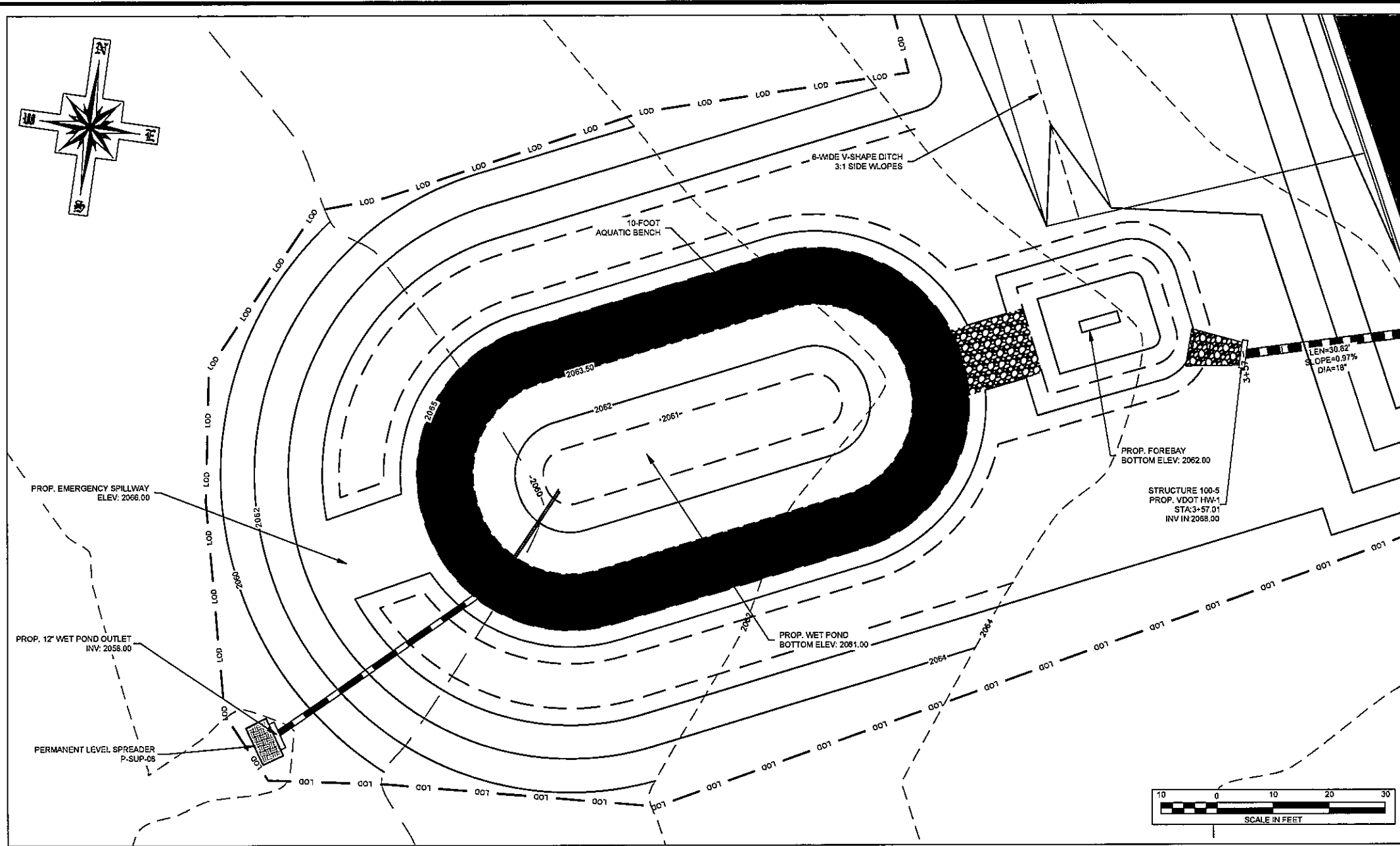


DATE	01-30-2026
NO.	REVISION DATE
1	
2	
3	
SHEET	C101
DRAWN BY	MPH
CHECKED BY	MRL
PROJECT NO.	TLG-2515
THE LANE GROUP INC.	

WET POND 3	
MANAGED TURF	0.50 AC
IMPERMEABLE	0.98 AC
TOTALS	1.48 AC
BMP TYPE	WET POND LVL. 1 (P-BAS-02)
PHOSPHORUS REMOVAL RATE	50%
PHOSPHORUS REMOVED	0.59 LBS
BMP TREATMENT VOLUME	3,743 CF
REQ. FOREBAY VOLUME	562 CF
WET POND TREATMENT VOLUME	3,181 CF
NORTHING	3453545.79
EASTING	10516886.16

FOREBAY STAGE STORAGE TABLE				
ELEV	AREA (sq. ft.)	DEPT H (ft)	AVG END INC. VOL. (cu. ft.)	AVG END TOTAL VOL. (cu. ft.)
2,081.000	532.82	N/A	N/A	0.00
2,082.000	1,222.53	1.000	877.57	877.57
2,083.000	2,551.92	1.500	2830.84	3708.41
2,084.000	3,266.21	0.500	1452.03	5160.44

WET POND STAGE STORAGE TABLE				
ELEV	AREA (sq. ft.)	DEPT H (ft)	AVG END INC. VOL. (cu. ft.)	AVG END TOTAL VOL. (cu. ft.)
2,082.000	14.00	N/A	N/A	0.00
2,084.000	264.32	2.000	278.32	278.32
2,085.000	489.34	1.000	376.83	655.15



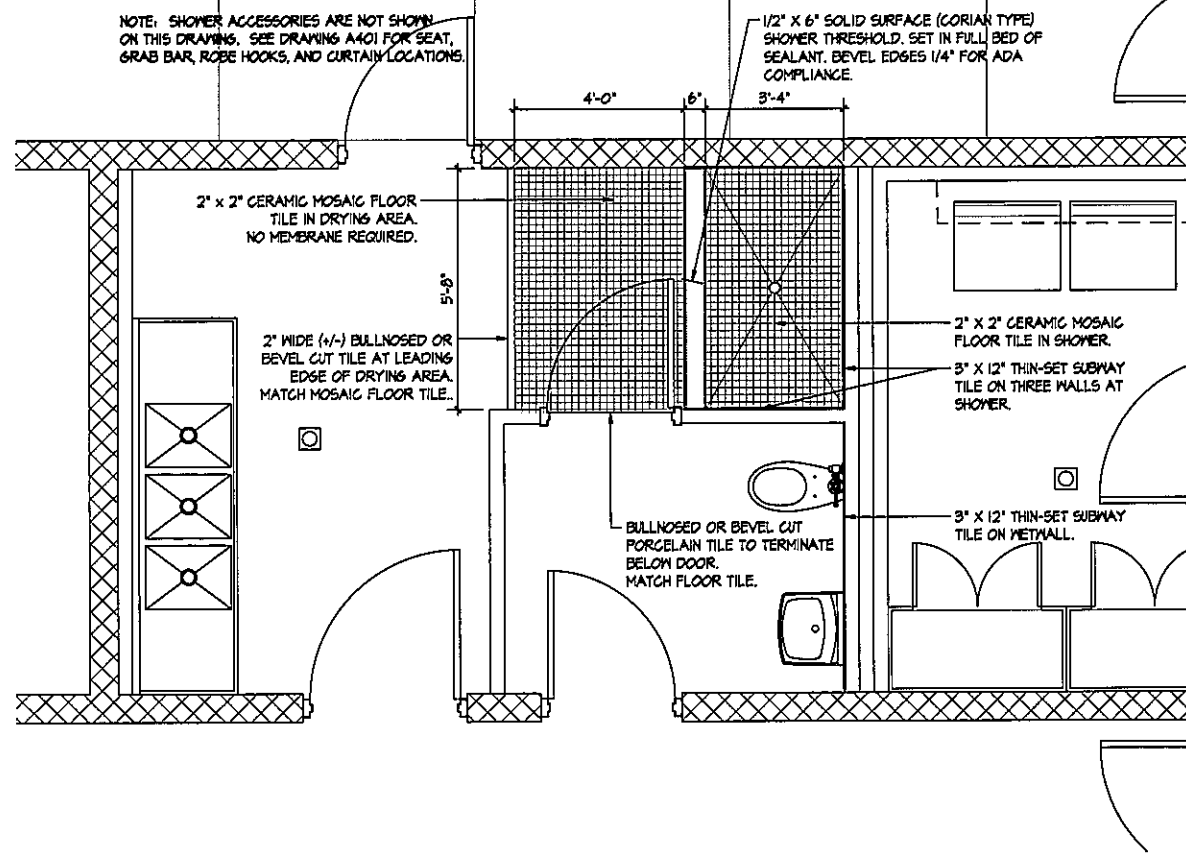
Rinker Design Associates, LLC
310 Valley Street, NW, Abingdon, Virginia 24210
Telephone: 276.256.6571 | www.rinker.com

NEW EMS FACILITY FOR
WASHINGTON COUNTY, VIRGINIA
HIGHLANDS BUSINESS PARK
OWENS DRIVE
GLANDE SPRING, VA 24340

SITE/GRADING PLAN



DATE	01-30-2026
NO.	REVISION DATE
1	
2	
3	
SHEET	C203
DRAWN BY	MPH
CHECKED BY	MRL
PROJECT NO.	TLG-2515
THE LANE GROUP INC.	



NOTE: SHOWER ACCESSORIES ARE NOT SHOWN ON THIS DRAWING. SEE DRAWING A401 FOR SEAT, GRAB BAR, ROBE HOOKS, AND CURTAIN LOCATIONS.

1/2" X 6" SOLID SURFACE (CORIAN TYPE) SHOWER THRESHOLD. SET IN FULL BED OF SEALANT. BEVEL EDGES 1/4" FOR ADA COMPLIANCE.

2" X 2" CERAMIC MOSAIC FLOOR TILE IN DRYING AREA. NO MEMBRANE REQUIRED.

2" WIDE (1/2") BULLNOSED OR BEVEL CUT TILE AT LEADING EDGE OF DRYING AREA. MATCH MOSAIC FLOOR TILE.

2" X 2" CERAMIC MOSAIC FLOOR TILE IN SHOWER.

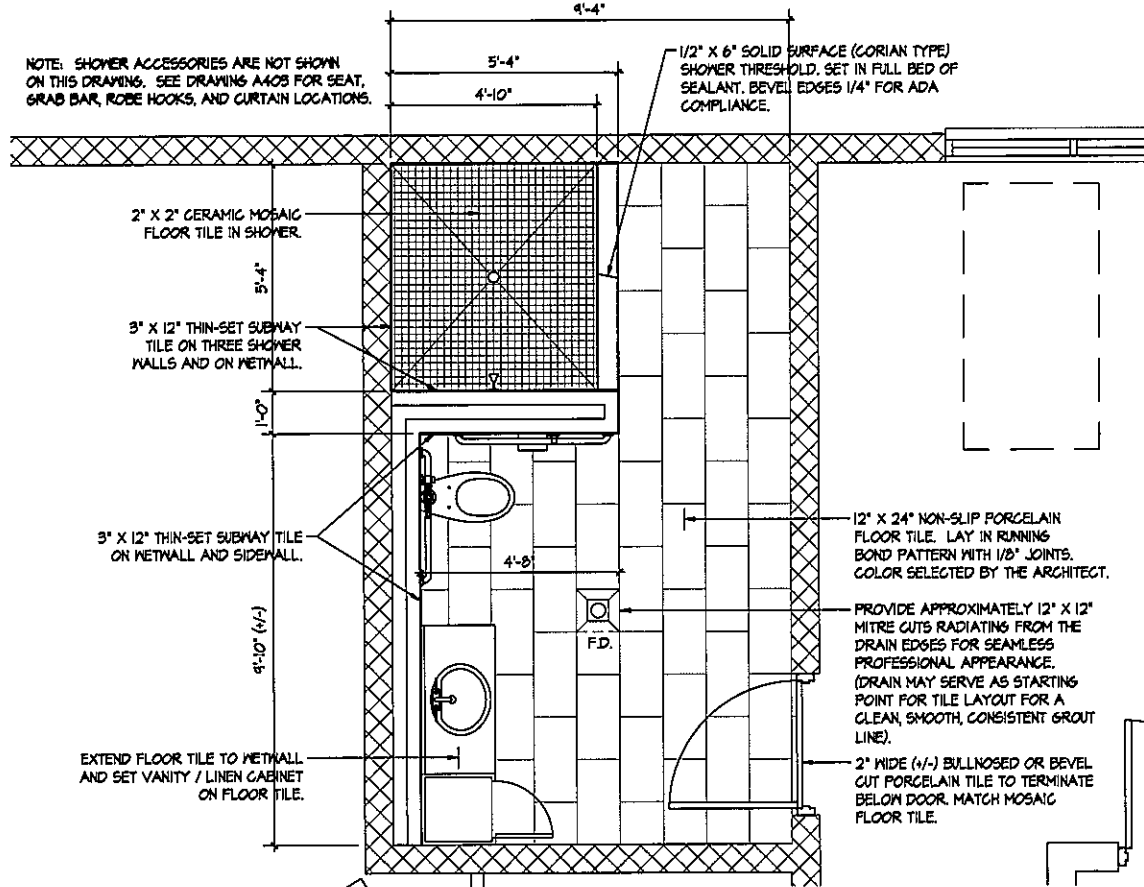
3" X 12" THIN-SET SUBWAY TILE ON THREE WALLS AT SHOWER.

BULLNOSED OR BEVEL CUT PORCELAIN TILE TO TERMINATE BELOW DOOR. MATCH FLOOR TILE.

3" X 12" THIN-SET SUBWAY TILE ON METMALL.

DECON RM. #115 - FINISHES

SCALE: 1/2" = 1'-0"



NOTE: SHOWER ACCESSORIES ARE NOT SHOWN ON THIS DRAWING. SEE DRAWING A408 FOR SEAT, GRAB BAR, ROBE HOOKS, AND CURTAIN LOCATIONS.

1/2" X 6" SOLID SURFACE (CORIAN TYPE) SHOWER THRESHOLD. SET IN FULL BED OF SEALANT. BEVEL EDGES 1/4" FOR ADA COMPLIANCE.

2" X 2" CERAMIC MOSAIC FLOOR TILE IN SHOWER.

3" X 12" THIN-SET SUBWAY TILE ON THREE SHOWER WALLS AND ON METMALL.

3" X 12" THIN-SET SUBWAY TILE ON METMALL AND SIDEMALL.

EXTEND FLOOR TILE TO METMALL AND SET VANITY / LINEN CABINET ON FLOOR TILE.

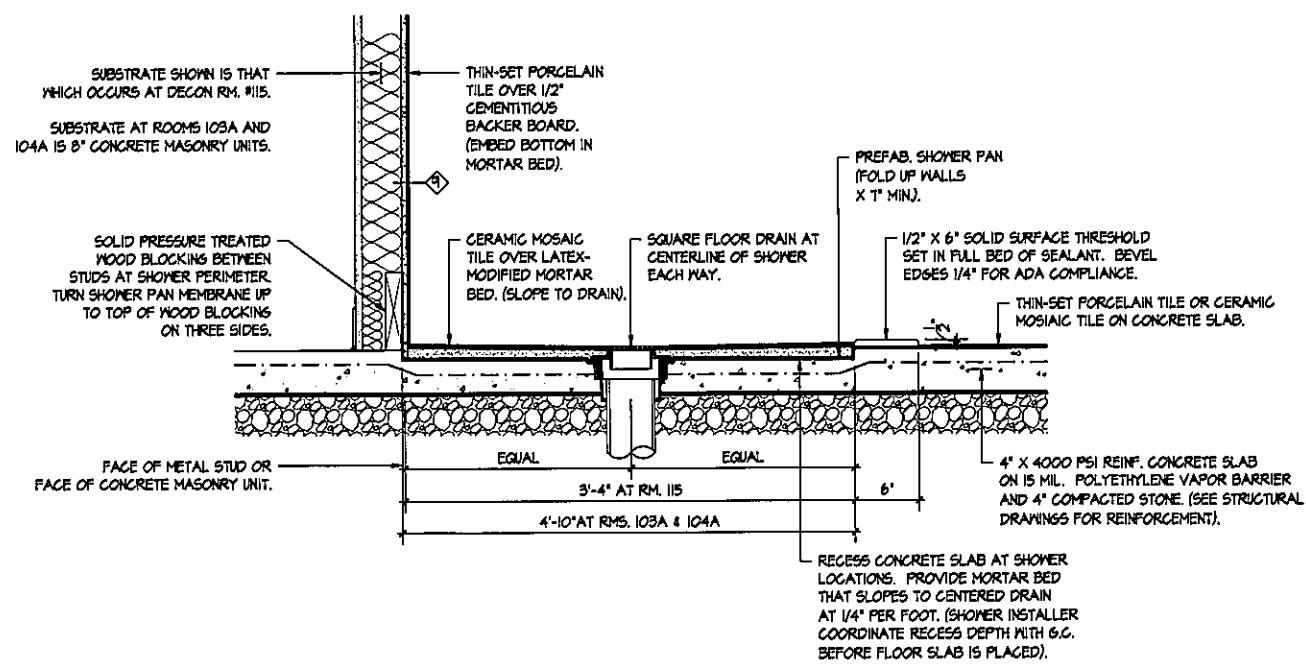
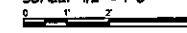
12" X 24" NON-SLIP PORCELAIN FLOOR TILE. LAY IN RUNNING BOND PATTERN WITH 1/8" JOINTS. COLOR SELECTED BY THE ARCHITECT.

PROVIDE APPROXIMATELY 12" X 12" MITRE CUTS RADIATING FROM THE DRAIN EDGES FOR SEAMLESS PROFESSIONAL APPEARANCE. (DRAIN MAY SERVE AS STARTING POINT FOR TILE LAYOUT FOR A CLEAN, SMOOTH, CONSISTENT GROUT LINE).

2" WIDE (1/2") BULLNOSED OR BEVEL CUT PORCELAIN TILE TO TERMINATE BELOW DOOR. MATCH MOSAIC FLOOR TILE.

**WOMEN'S BATHROOM # 104A FINISHES
MEN'S BATHROOM # 103A FINISHES (SIMILAR)**

SCALE: 1/2" = 1'-0"



SUBSTRATE SHOWN IS THAT WHICH OCCURS AT DECON RM. #115.
SUBSTRATE AT ROOMS 103A AND 104A IS 8" CONCRETE MASONRY UNITS.

SOLID PRESSURE TREATED WOOD BLOCKING BETWEEN STUDS AT SHOWER PERIMETER. TURN SHOWER PAN MEMBRANE UP TO TOP OF WOOD BLOCKING ON THREE SIDES.

FACE OF METAL STUD OR FACE OF CONCRETE MASONRY UNIT.

THIN-SET PORCELAIN TILE OVER 1/2" CEMENTITIOUS BACKER BOARD. (EMBED BOTTOM IN MORTAR BED).

CERAMIC MOSAIC TILE OVER LATEX-MODIFIED MORTAR BED. (SLOPE TO DRAIN).

SQUARE FLOOR DRAIN AT CENTERLINE OF SHOWER EACH WAY.

PREFAB. SHOWER PAN (FOLD UP WALLS X 1" MIN).

1/2" X 6" SOLID SURFACE THRESHOLD SET IN FULL BED OF SEALANT. BEVEL EDGES 1/4" FOR ADA COMPLIANCE.

THIN-SET PORCELAIN TILE OR CERAMIC MOSAIC TILE ON CONCRETE SLAB.

4" X 4000 PSI REINF. CONCRETE SLAB ON 15 MIL. POLYETHYLENE VAPOR BARRIER AND 4" COMPACTED STONE. (SEE STRUCTURAL DRAWINGS FOR REINFORCEMENT).

RECESS CONCRETE SLAB AT SHOWER LOCATIONS. PROVIDE MORTAR BED THAT SLOPES TO CENTERED DRAIN AT 1/4" PER FOOT. (SHOWER INSTALLER COORDINATE RECESS DEPTH WITH G.C. BEFORE FLOOR SLAB IS PLACED).

TYPICAL SHOWER BED DETAIL

SCALE: 1/2" = 1'-0"



TYPICAL TILE NOTES

1. FOR SHOWER WATER PROOFING MEMBRANE (SHOWER PAN), PROVIDE A Pliable POLYETHYLENE WATERPROOFING MEMBRANE AND VAPOR RETARDER.

ACCEPTABLE PRODUCTS INCLUDE: SCHLUTER "KERDI", LATIGRETE "HYDRO BAN", AND MAPEI "MAPEGUARD MF 200". OTHER PRODUCTS CONSIDERED UPON REQUEST.

2. WATERPROOF THE JOINT BETWEEN THE MORTAR BED AND SHOWER PAN X 2" (1/2") WIDE.

ACCEPTABLE PRODUCTS INCLUDE: SCHLUTER "KERDI FIX", SIKA "SIKAFLEX CONSTRUCTION SEALANT", AND LATIGRETE "HYDRO BAN ADHESIVE & SEALANT." OTHER PRODUCTS CONSIDERED UPON REQUEST.

3. AT CMU METMALLS, COAT BLOCK WITH A LIQUID APPLIED WATERPROOFING MEMBRANE THAT MEETS ANSI A118.10 STANDARDS.

ACCEPTABLE PRODUCTS INCLUDE: LATIGRETE "HYDRO BAN", MAPEI "AGUA DEFENSE" AND CUSTOM BUILDING PRODUCTS "REDSARD". OTHER PRODUCTS CONSIDERED UPON REQUEST.

4. AT CEMENTITIOUS BACKER BOARD LOCATIONS, PROVIDE A LIQUID APPLIED MEMBRANE OVER THE BACKER BOARD.

ACCEPTABLE PRODUCTS INCLUDE: LATIGRETE "HYDRO BAN", US& "DUROCK LIQUID WATERPROOFING", CUSTOM BUILDING PRODUCTS "REDSARD", AND MAPEI "AGUA DEFENSE". OTHER PRODUCTS CONSIDERED UPON REQUEST.



DATE	01-30-2026
NO.	REVISION DATE
1	A702 ADDED 06/05/2026
2	
3	
SHEET: A702	
DRAWN BY: DMW	CHECKED BY: MRL
PROJECT NO: TLG-2515	
THE LANE GROUP INC.	

