

WAZIWA
 WAZIWA
 WAZIWA

Draw in **GREEN** what you would like to **PRESERVE**
 Draw in **RED** what you would like to **CHANGE**

Please feel free to add additional comments:

Please provide a short description of your comment!
 - Thanks

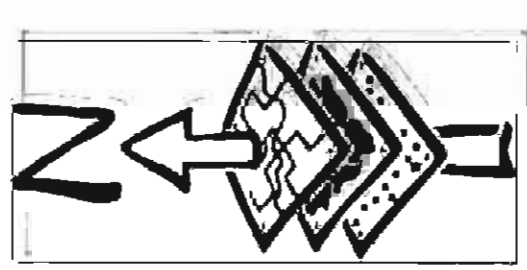
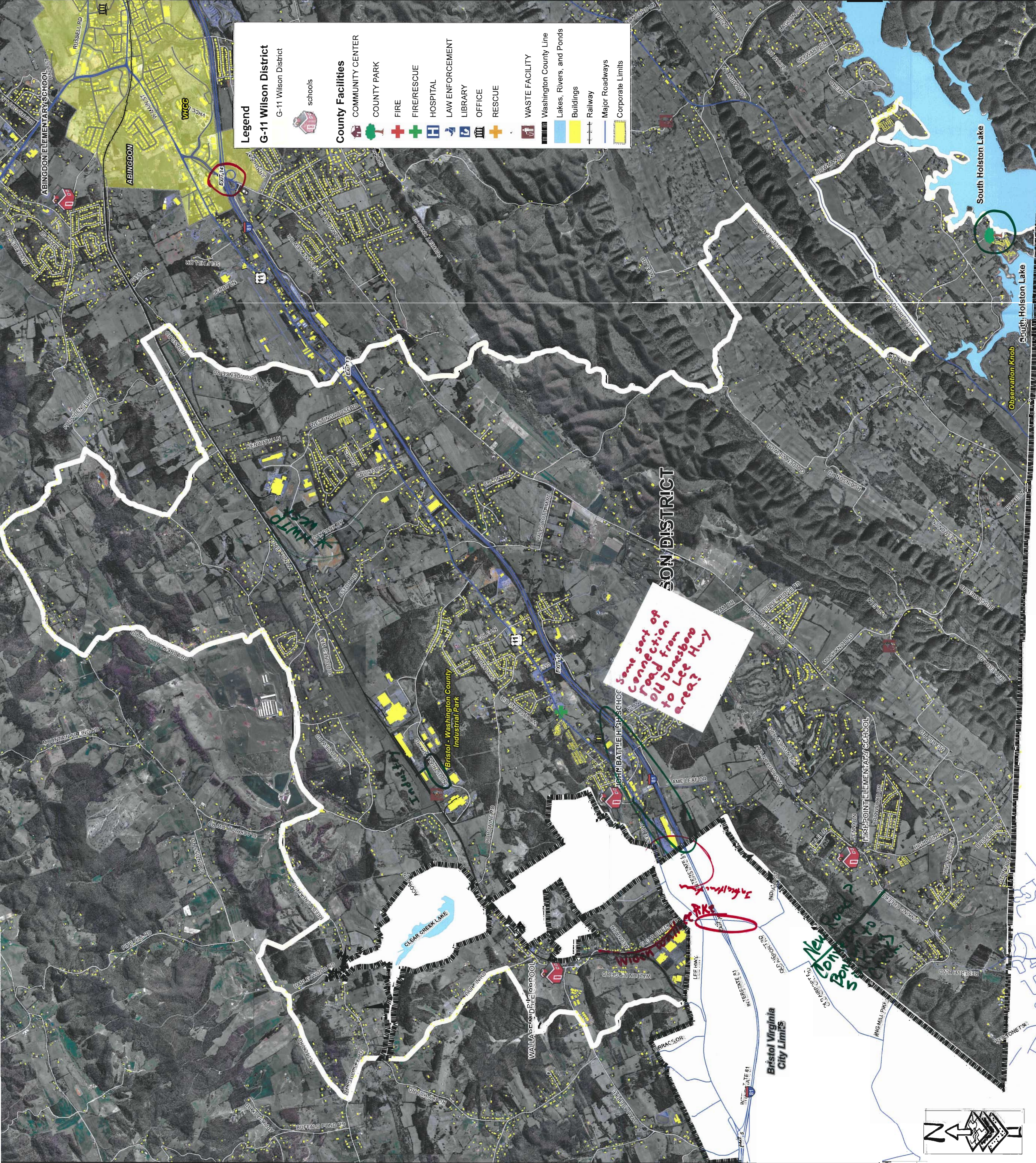
- Improve infrastructure to manage Exit 7 expansion (Also Exit 5 coming soon)
 - THANK ON TRAFFIC CONGESTION FROM EXIT 7 TO EXIT 13

- Exit 14
 - Improve

* Complete Oak Park Industrial L White Water Treatment Plant to Provide Sewer Services to Western Wash Co. Industrial & Residential Needs

* Far too many low wage Retail Stores Exit 7.
 At the end of Trojan Drive, widening road to have a right and left exit lane?

Work To Make County Park of Abernethy Falls



COMMUNITY MEETING MAP EXERCISE - WILSON DISTRICT