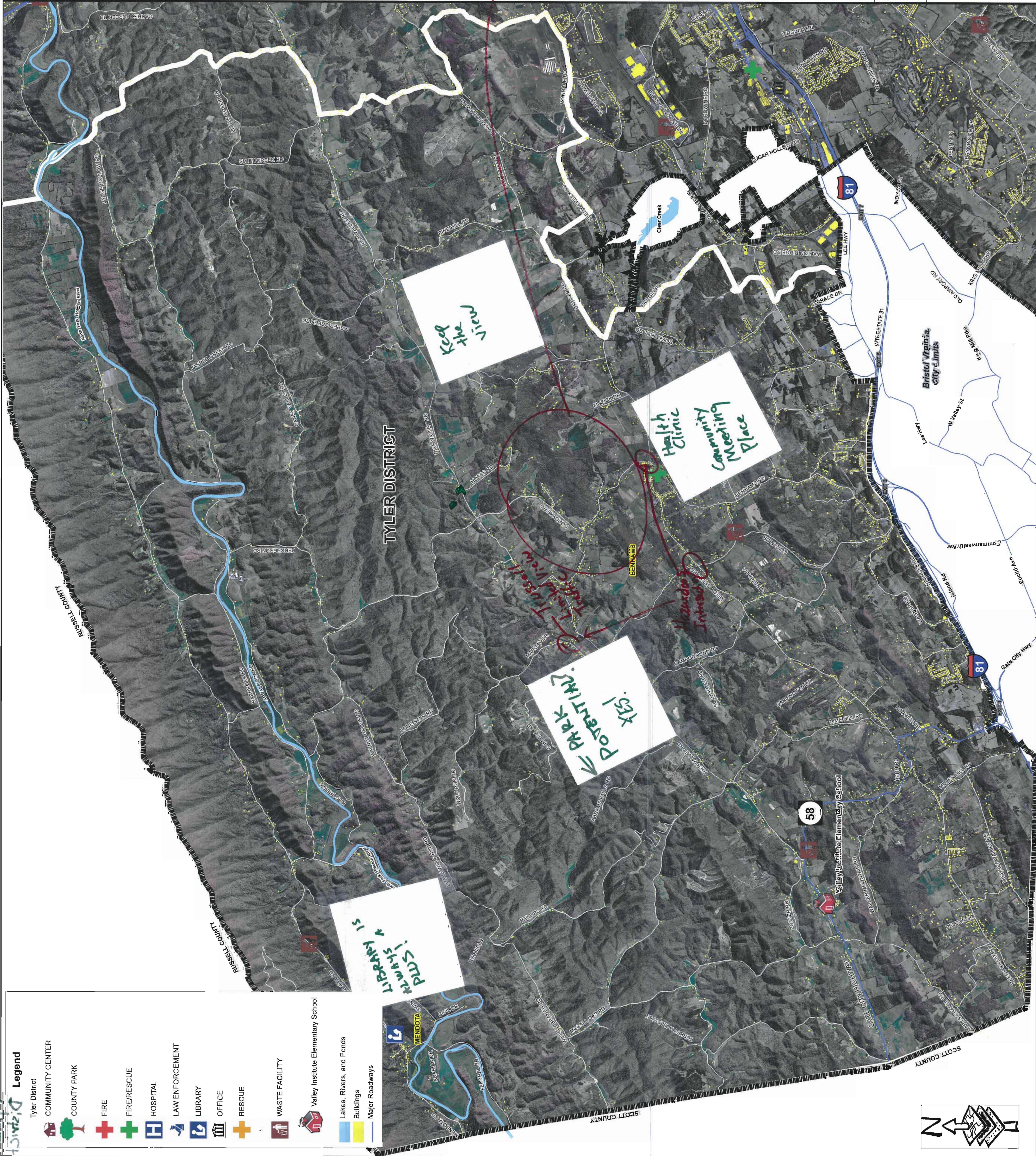


Draw in **GREEN** what you would like to **PRESERVE**  
 Draw in **RED** what you would like to **CHANGE**

Please feel free to add additional comments:



**Legend**

- Tyler District
- COMMUNITY CENTER
- COUNTY PARK
- FIRE
- FIRE/RESCUE
- HOSPITAL
- LAW ENFORCEMENT
- LIBRARY
- OFFICE
- RESCUE
- WASTE FACILITY
- Valley Institute Elementary School
- Lakes, Rivers, and Ponds
- Buildings
- Major Roadways

Cell Coverage.

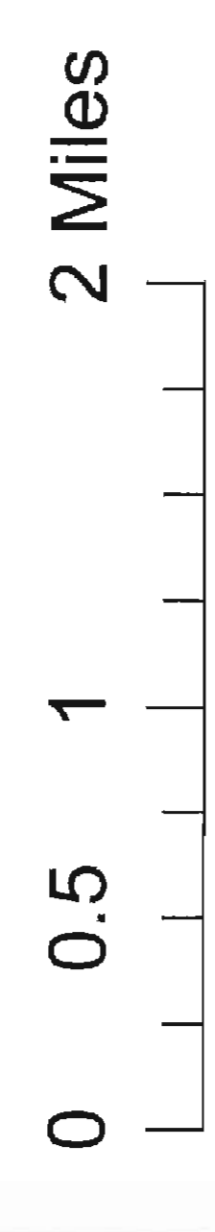
Really like what the trail developer Mendota

Keep the main

Health Clinic Community Meeting Place

Park Potential? Yes!

Library 15



COMMUNITY MEETING MAP EXERCISE - TYLER DISTRICT