

**Legend**

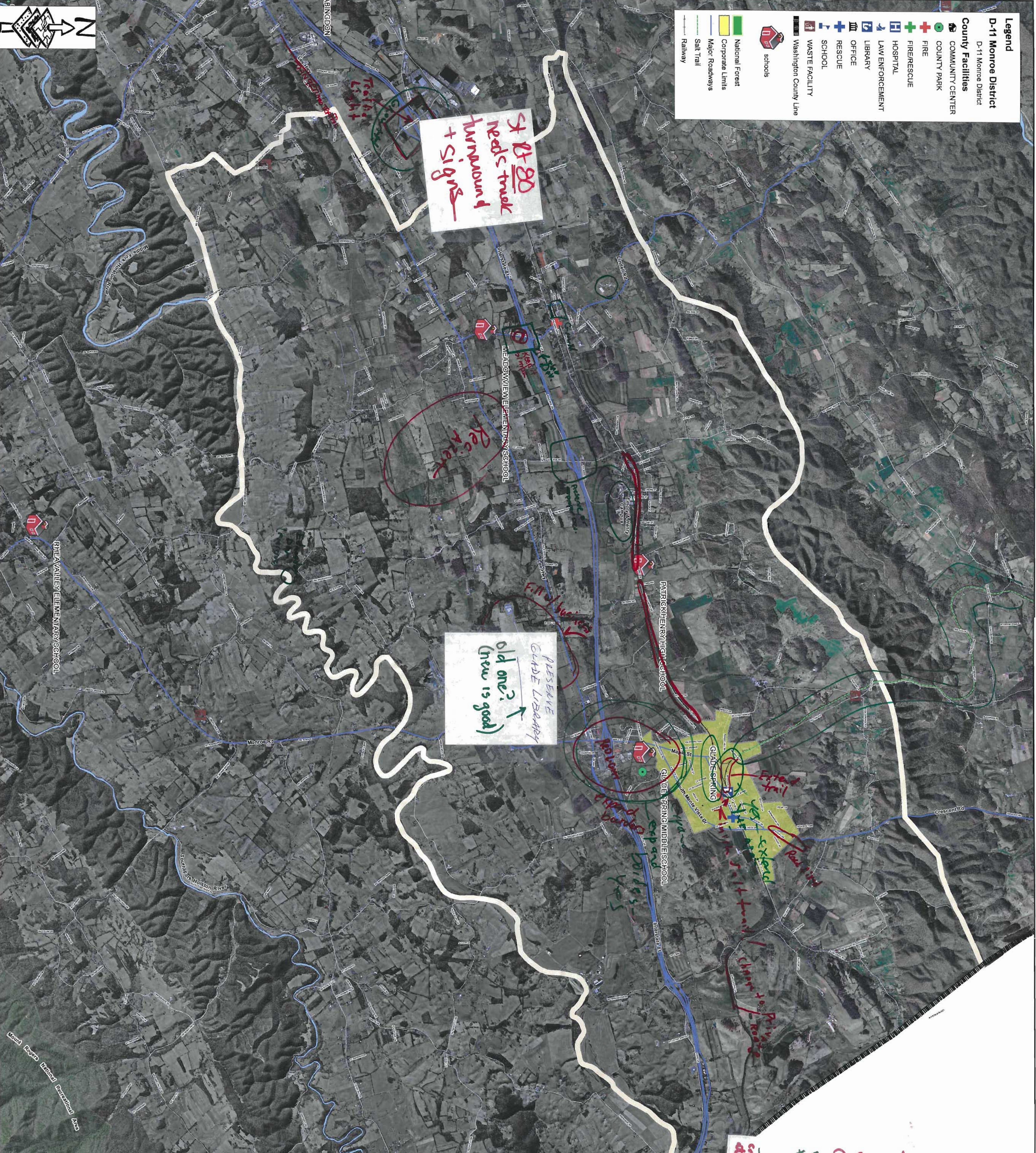
D-11 Monroe District

**County Facilities**

- Community Center
- County Park
- Fire
- Fire/Rescue
- Hospital
- Law Enforcement
- Library
- Office
- Rescue
- School
- Waste Facility
- Washington County Line

**Other**

- National Forest
- Corporate Limits
- Major Roadways
- Salt Trail
- Railway
- Schools



**COMMUNITY MEETING MAP EXERCISE - MONROE DISTRICT**

**Draw in GREEN what you would like to PRESERVE**

**Draw in RED what you would like to CHANGE**

**Hillman Hwy**  
free to add additional

**From Glade to PHTS neck**  
wider shoulders (+ bike-trail) w/TP needs  
Need sidewalk (w/ trail) b/w  
EMC and Patrick Henry H.S.

**Glade Spring/MTWTP**  
w/TP needs  
upgrading to more asphalt

**Preserve Exit from typical exit development**  
taskful area

**Enhance Route 70**  
for bikes, walks  
w/TP needs  
"Milton's" v. Glade

**Slow down on Crossbar Dr**  
700 Block

**Draw to create/**  
recreate Camp Robinsons and Elmondson Dam as County Rec. Area.  
Oversee the water being for the water being back a swimming body on the road with park along river  
John Body  
Elmondson Dam  
County Rec. Area  
LEB Hwy 11  
with new bridge & area  
Some things need traffic lights  
Some things need more lights  
Safety plan  
Some things need traffic lights  
Some things need more lights  
Safety plan

**Maintain small farms, and green spaces.**  
Keep uniqueness of  
Sawtooth  
business growth  
green spaces, and  
3 Musk's Mill is still standing  
could be kept  
of this side loop  
to time!

**Safe for School**

0 2 Miles

**PLAN WASHINGTON COUNTY**