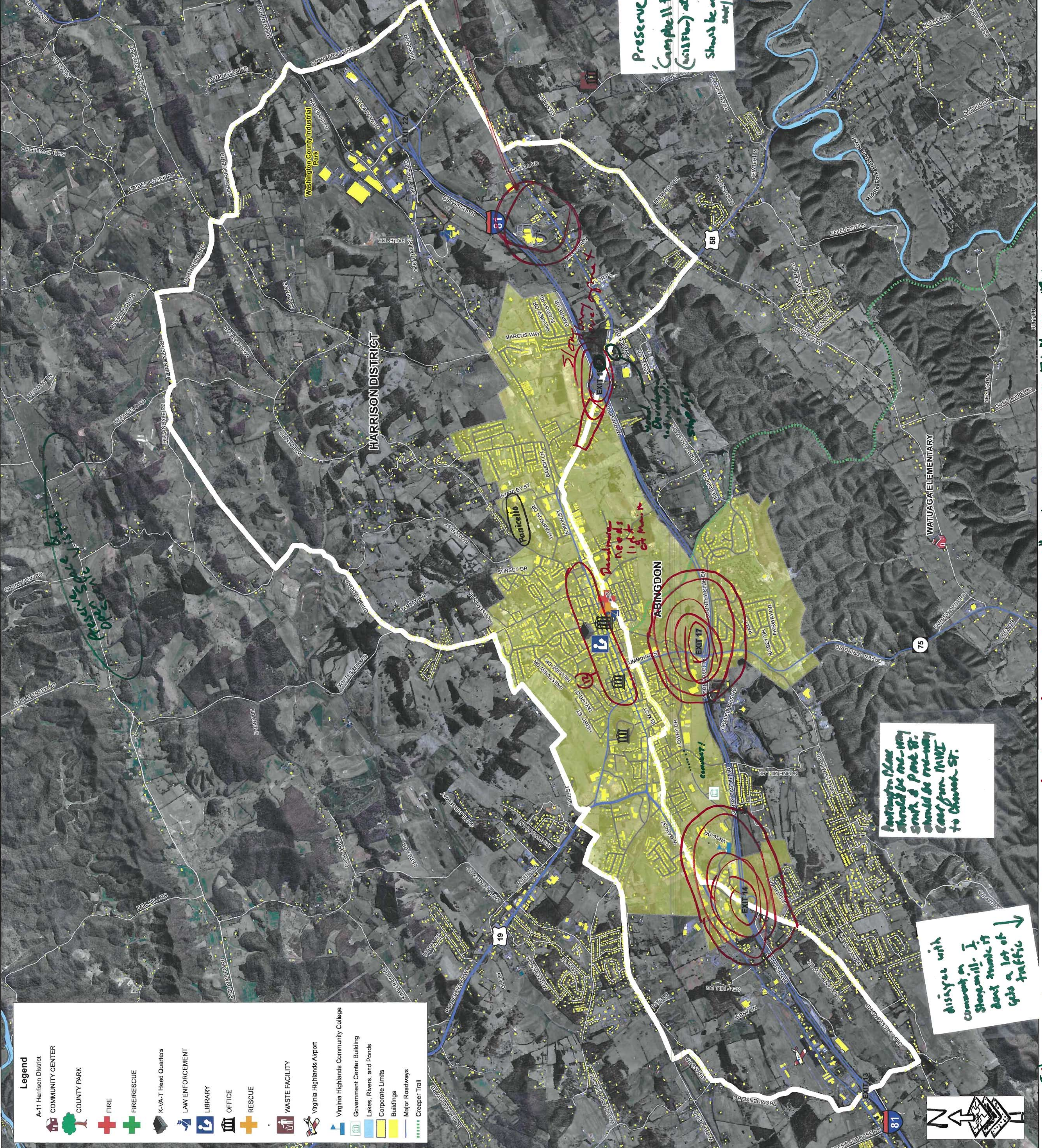
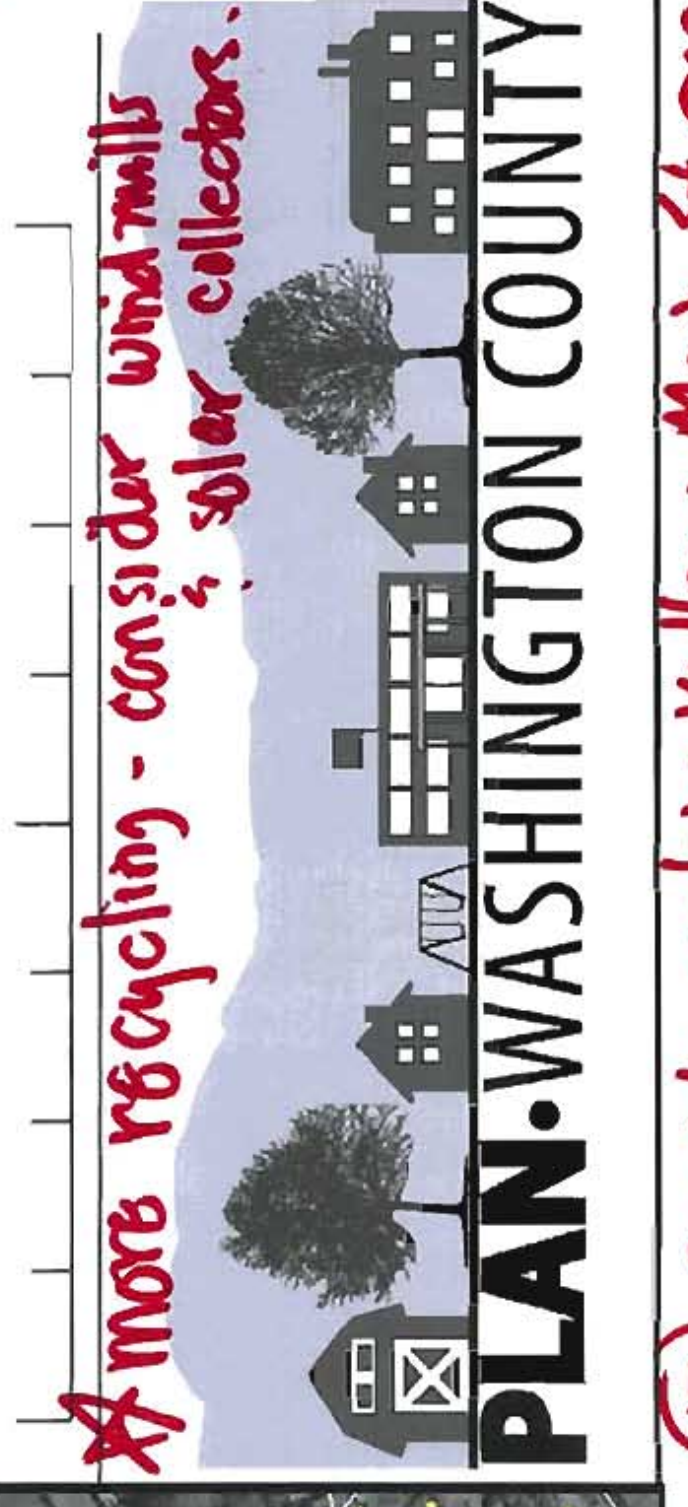


Draw in **GREEN** what you would like to **PRESERVE**
 Draw in **RED** what you would like to **CHANGE**

Please feel free to add additional comments:

Exit 17 19 & 14 major improvement in those areas
 Need new animal shelter at a better location
 Keep Rich Valley free of backing keep agricultural use
 Creeper trail is good spread induced by T. Memorial Hosp. Yeah for the Panicle Trail
 Dangerous road from exit 19 NEED TRAFFIC LIGHTS AT BOTTOM OF I-91 RAMP
 Arts + Tourism VERY dangerous intersection with I-91 ramp need commercial study stoplights timing (inflow) um things STREET LIGHTS area
 Preserve
 Complete those traffic flow - Courthouse (with flow) at Exit 19 - Stop light YES should be on Ridge Keep Wash. CO. free of fracking & Preserve our water
 Connect French Moore Blvd w/ Stone Mill! Exit 24 flow can use allow a truck stop out to an overdrive El. School?? MNC - better recreational preserve rural of lake in county is needed bike paths
 MORE BIKE LANES! 2 Miles at 0 0.5 1 1.5
 more recycling - consider windmills & solar collectors.



Legend

- A-11 Harrison District
- COMMUNITY CENTER
- COUNTY PARK
- FIRE
- FIRE/RESCUE
- K-VA-T Head Quarters
- LAW ENFORCEMENT
- LIBRARY
- OFFICE
- RESCUE
- WASTE FACILITY
- Virginia Highlands Airport
- Virginia Highlands Community College
- Government Center Building
- Lakes, Rivers, and Ponds
- Corporate Limits
- Buildings
- Major Roadways
- Creeper Trail

Abingdon Place should be on Hwy South of Park St. should be runway East from MNC to Church St.

disagree with comment on Stone Mill. I don't think it adds a lot of traffic

Stone Mill too much traffic people try to avoid narrow Cummings St. carry narrow

consider the use of roundabouts instead of stoplights where possible

Best maintenance Exit 17 - the main gateway into Abingdon

COMMUNITY MEETING MAP EXERCISE - HARRISON DISTRICT

12 Consider making Valley + Mark St one way to improve traffic flow need better connection between US19 + Exit 14